

Size 11 (28mm) Series

The size 11 hybrid linear actuator occupies a mounting footprint of slightly above 1 in² but provides over 3X the continuous thrust of size 8.



Motor Characteristics

Motor	Voltage (V)	Current (A)	Resistance (Ω)	Inductance (mH)	Weight (g)	Lead Wire No	Motor Length (mm)
11-2105	4.5	0.5	9.1	6.0	117	4	33.5
11-2110	2.2	1.0	2.1	1.2	117	4	33.5
11-2209	3.9	0.95	4.1	4.0	173	4	45
11-2216	2.25	1.6	1.45	1.1	173	4	45

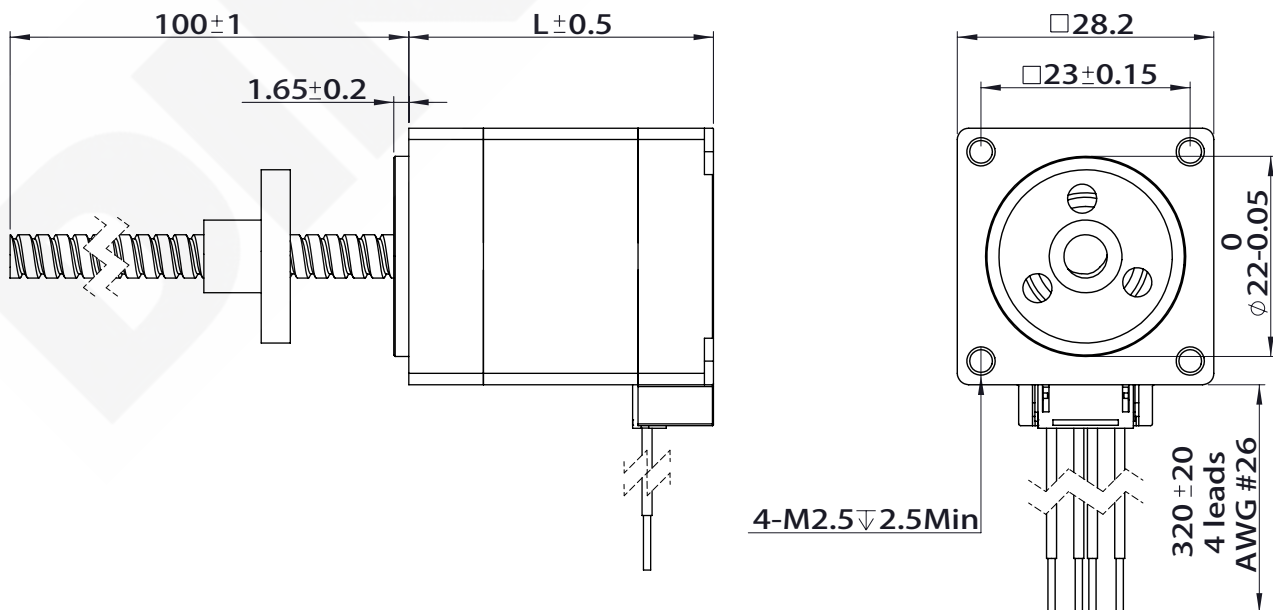
Available Lead Screw and Travel per Step

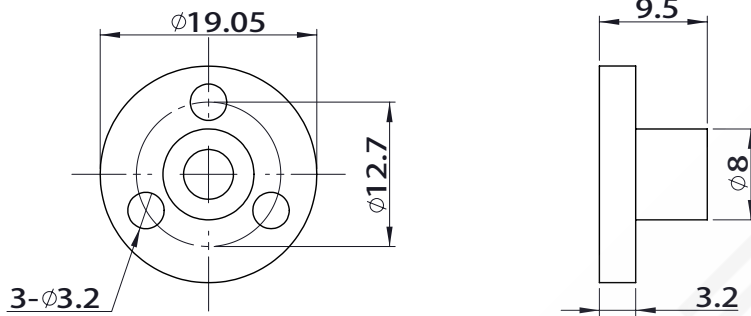
Screw Dia. (inch)	Screw Dia. (mm)	Lead (inch)	Lead (mm)	Lead Code	Travel Per Step @ 1.8 deg (mm)*
0.188	4.77	0.025	0.635	A	0.0032
0.188	4.77	0.050	1.270	D	0.0063
0.188	4.77	0.100	2.540	K	0.0127
0.188	4.77	0.200	5.080	R	0.0254
0.188	4.77	0.400	10.160	X	0.0508

Value truncated

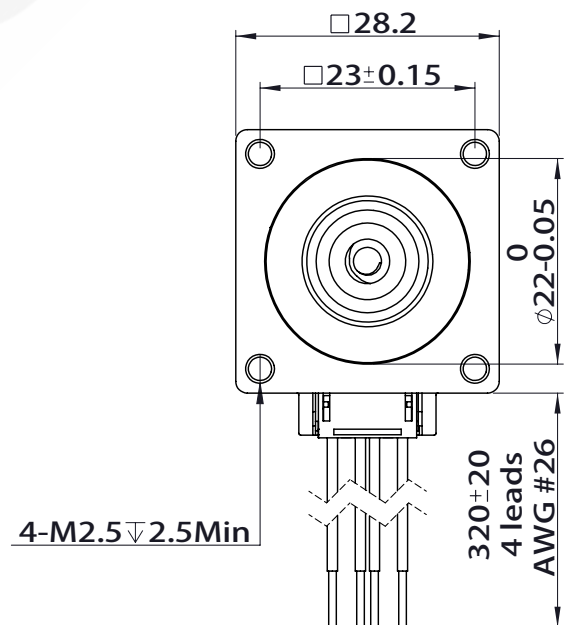
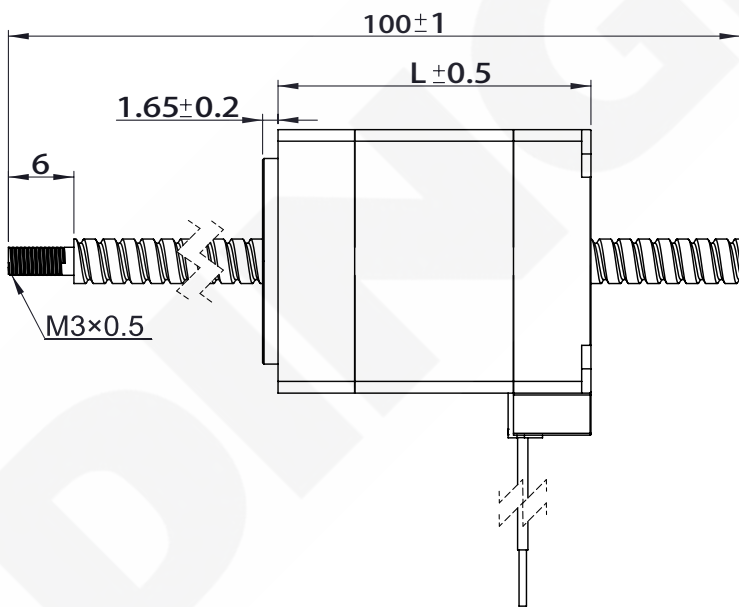
Dimensional Drawings

External Actuator





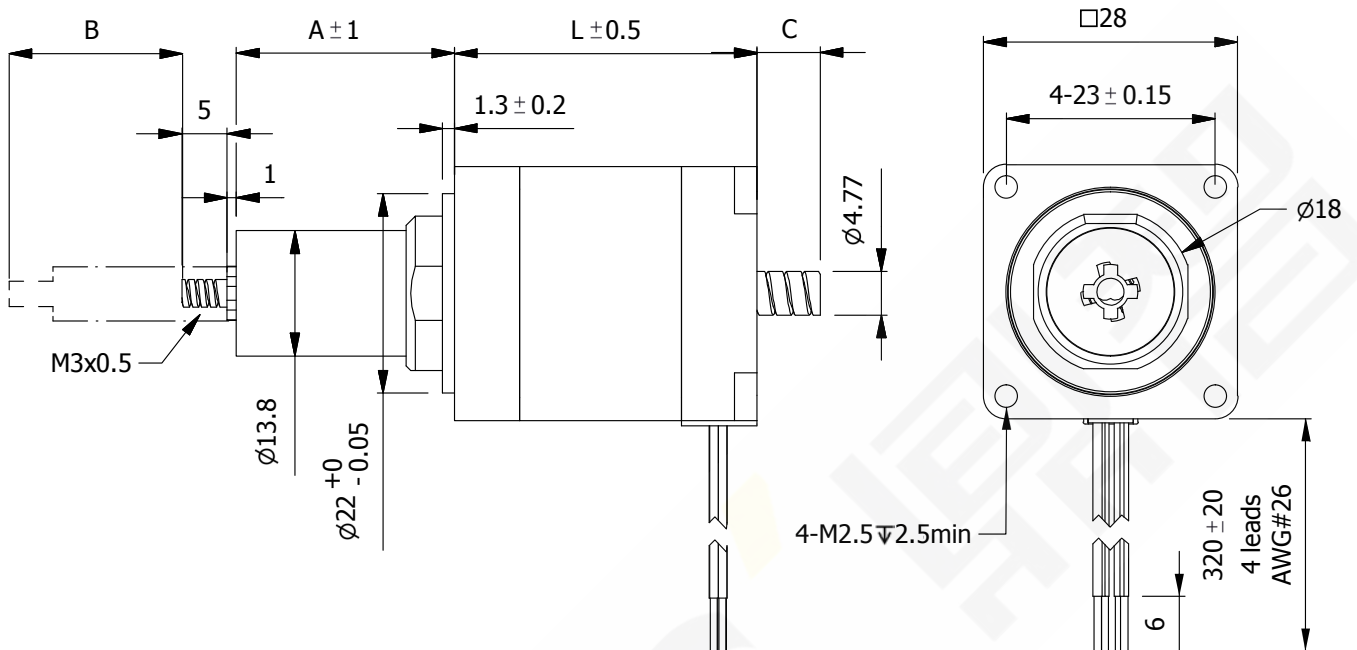
Non-Captive Actuator



NOTE: All drawings are First Angle Projection – ISO Standard. (3D Models are available).

Size 11 (28mm) Series

Kaptive Actuator

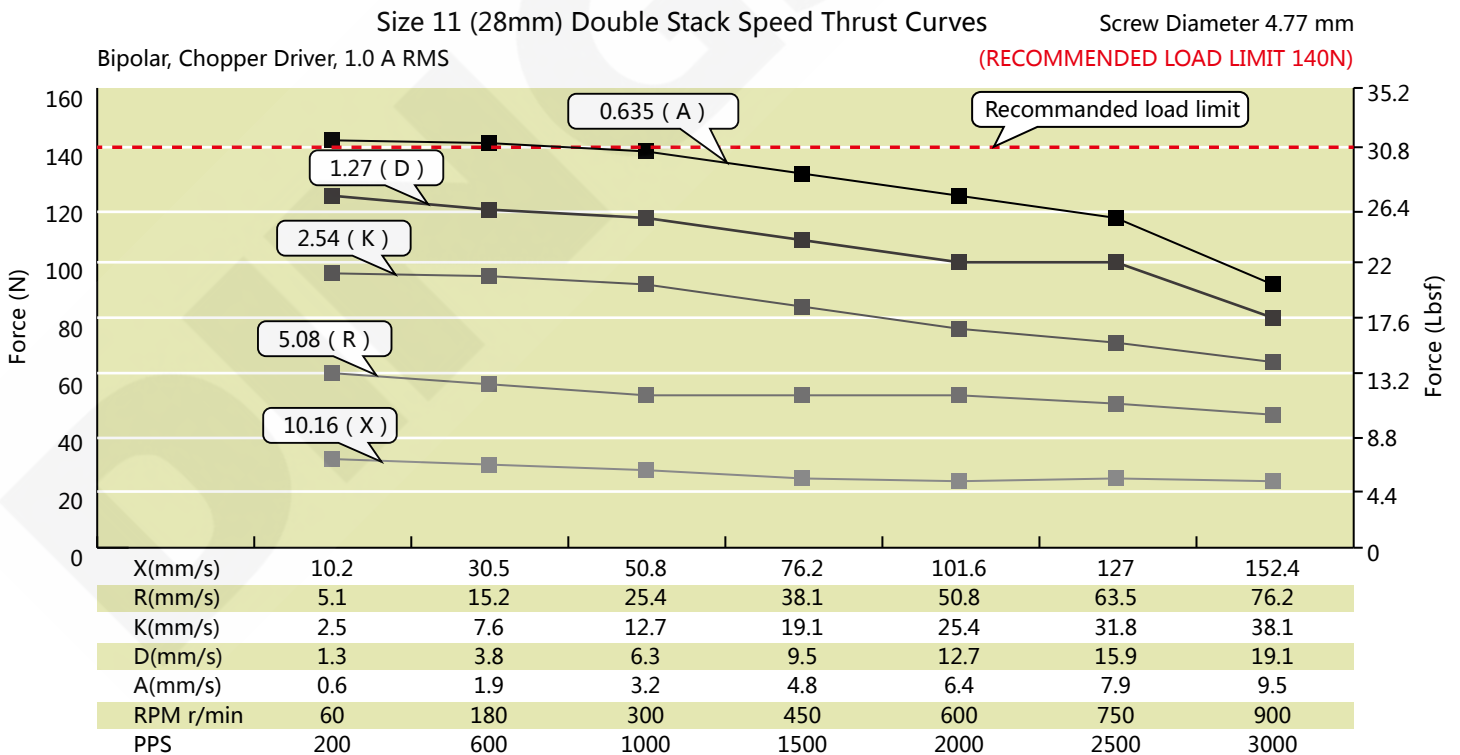
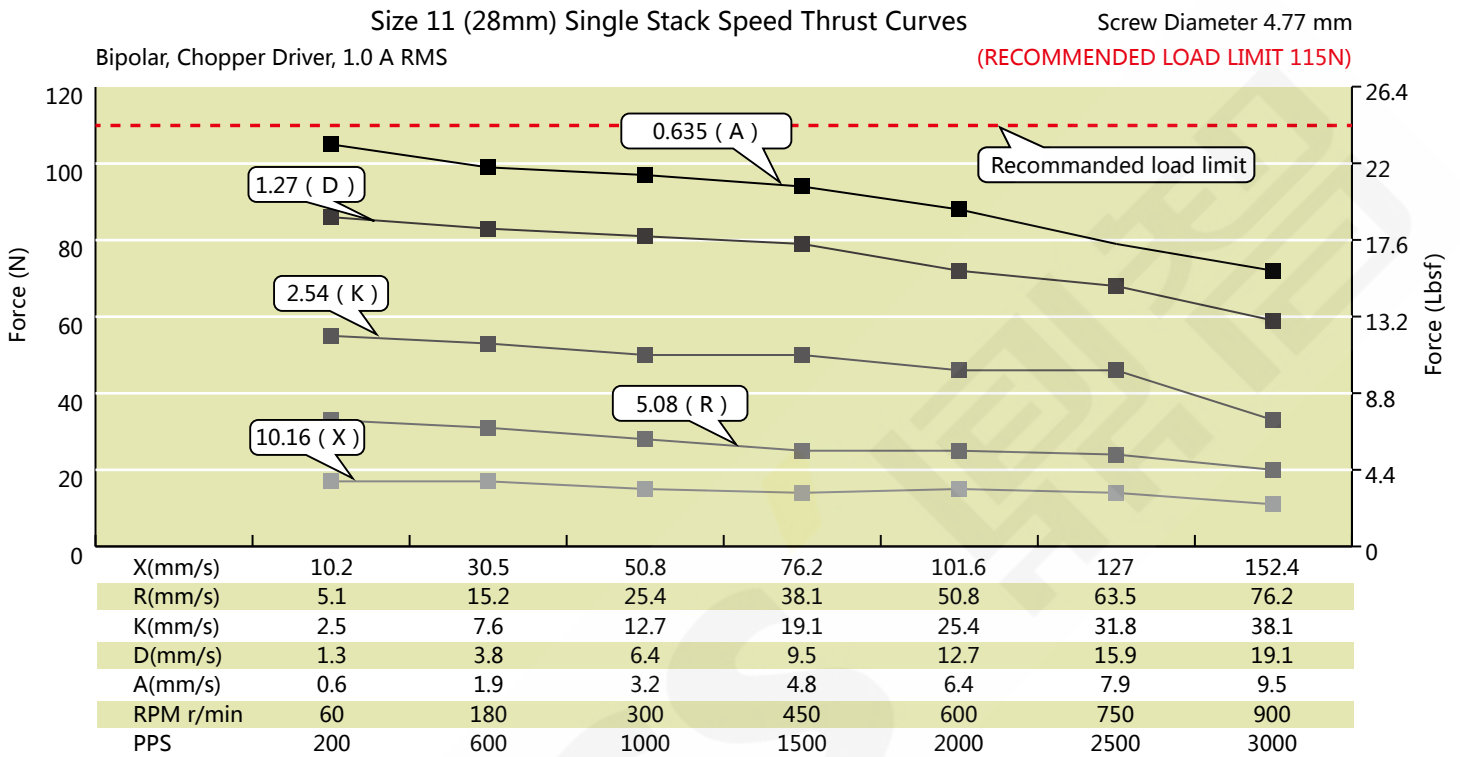


Stroke Specification

A (mm)	Stroke B (mm)	C (mm)	
		L=33.3	L=45
15.70	11.70	1.0	0.0
22.10	18.05	7.4	0.0
28.40	24.40	13.7	4.0
34.80	30.80	20.1	10.4
41.10	37.10	26.4	16.8
53.80	49.80	39.0	29.4
63.50	62.50	51.7	42.1

Size 11 (28mm) Series

Size 11 (28mm) Performance Curves



TEST CONDITION:

Testing Voltage: 40VDC, Driver Model: DS-2422-001, at rated current (rms). Motor's thrust will be changed with different voltage and driver. 50% thrust margin is recommended.