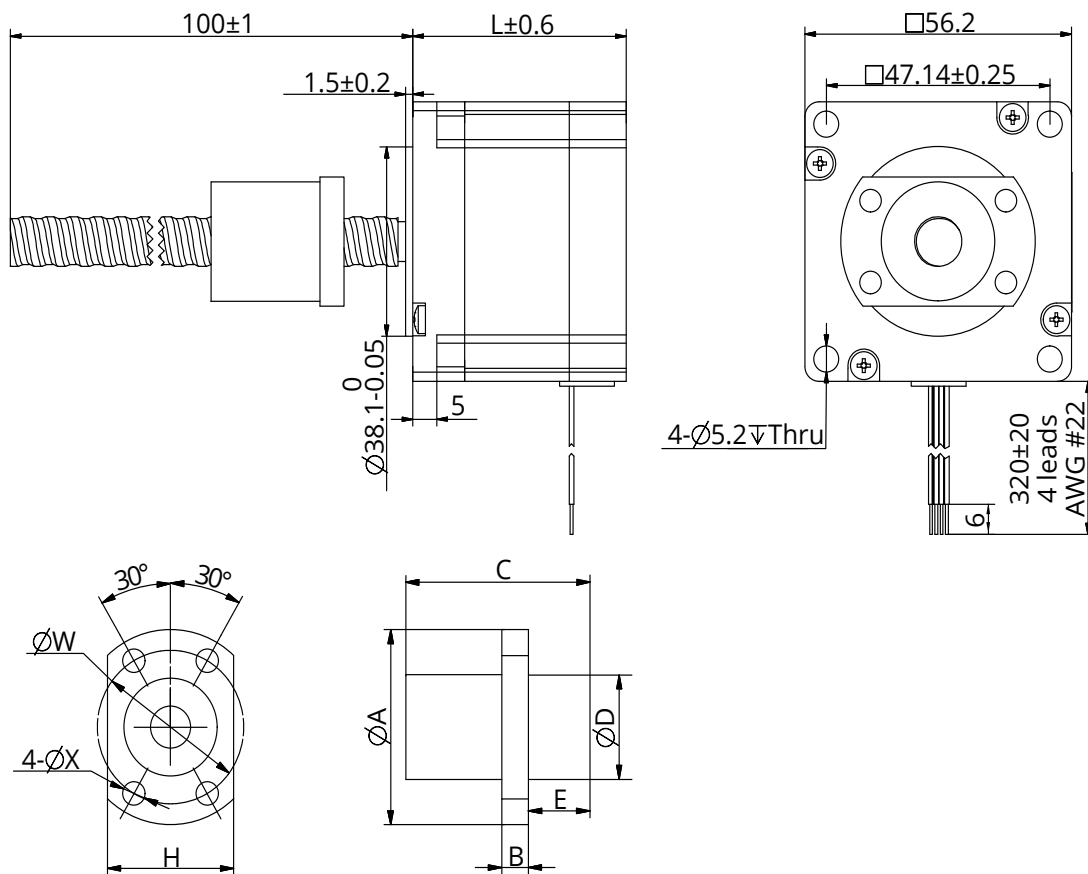


Size 23 (57mm) Series

Motor Characteristics

Motor	Voltage (V)	Current (A)	Resistance (Ω)	Inductance (mH)	Lead Wire No.	Motor Length (mm)
23E2120	3.5	2	1.75	4.1	4	45
23E2130	2.4	3	0.8	1.7	4	45
23E2225	5	2.5	2	5.2	4	65
23E2240	2.8	4	0.7	2	4	65

Dimensional Drawings



Note : All drawings are 1st Angle Projection - ISO Compliant (3D models available)

Size 23 (57mm) Series

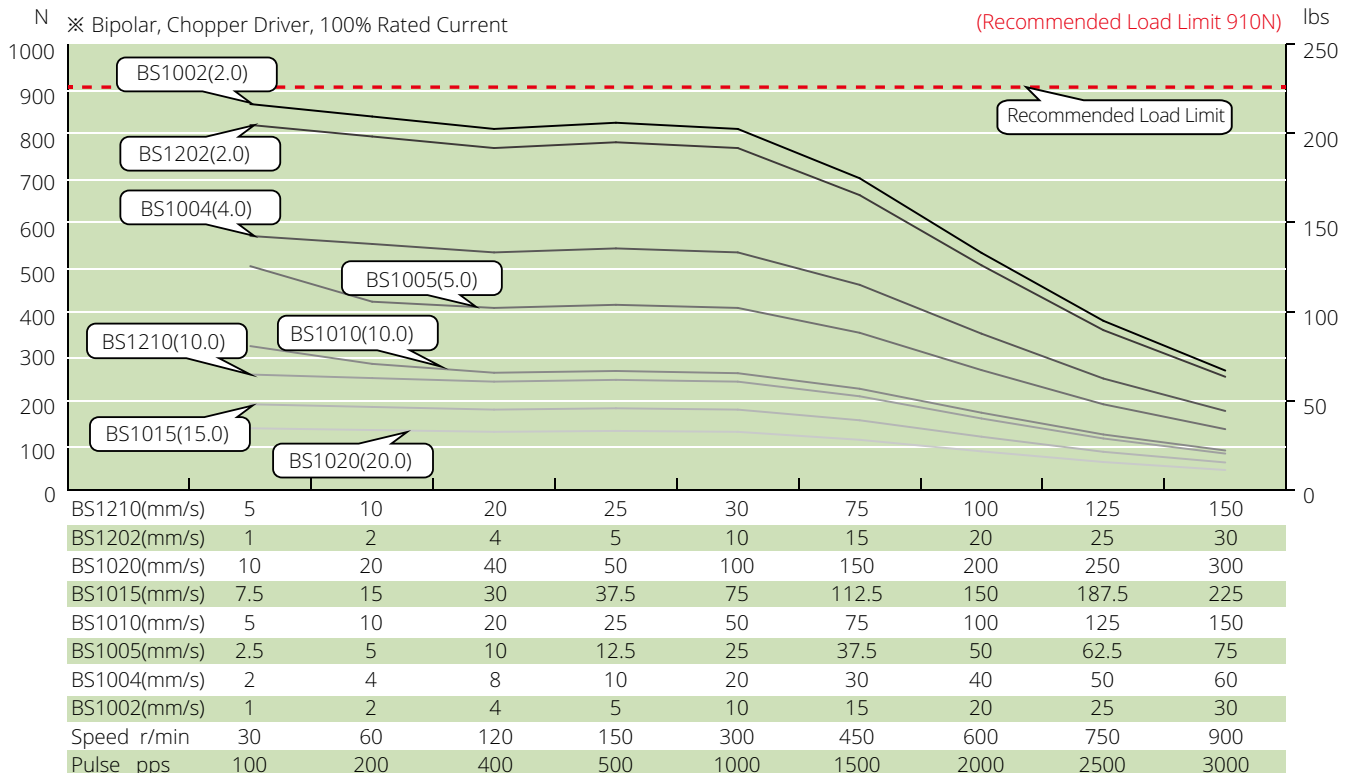
Stepper Ball Screw Specification

Ball screw type	1002	1004	1005	1010	1015	1020	1202	1210					
Ball size	Φ1.5875	Φ2.0	Φ2.0	Φ2.0	Φ2.0	Φ1.5875	Φ1.5875	Φ2.381					
Number of thread	1	1	1	2	2	4	1	2					
Thread direction	Right												
Shaft root dia	Φ8.6	Φ8.2	Φ8.2	Φ8.4	Φ8.4	Φ8.7	Φ10.6	Φ10.2					
Number of circuit	3.7×1	2.7×1	2.7×1	1.6×2	1.6×2	0.7×4	3.7×1	1.7×2					
Shaft, nut material	SCM415H												
Surface hardness	HRC58~62												
Anti-rust treatment	Anti-rust oil												
Grade	C7												
Nut Size	A	B	C	D	H	W	X	E	Position accuracy	Total run out	Axial play	Dynamic load (N)	Static load (N)
BS1002	40	5	24	23	25	32	4.5		±0.05	0.12	≤0.03	2700	5300
BS1004	41	5	28	24	26	33	4.5		±0.05	0.12	≤0.03	3000	5200
BS1005	40	5	26	23	25	32	4.5		±0.05	0.12	≤0.03	3000	5200
BS1010	40	5	24	23	25	32	4.5	6	±0.05	0.12	≤0.03	3300	5900
BS1015	40	5	33	23	25	32	4.5	6	±0.05	0.12	≤0.03	3300	6400
BS1020	37	5	23	20	22	29	4.5	5	±0.05	0.12	≤0.03	2100	4000
BS1202	42	5	24	25	27	34	4.5		±0.05	0.12	≤0.03	3000	6400
BS1210	41	5	30	24	26	33	4.5	9.5	±0.05	0.12	≤0.03	5100	9800

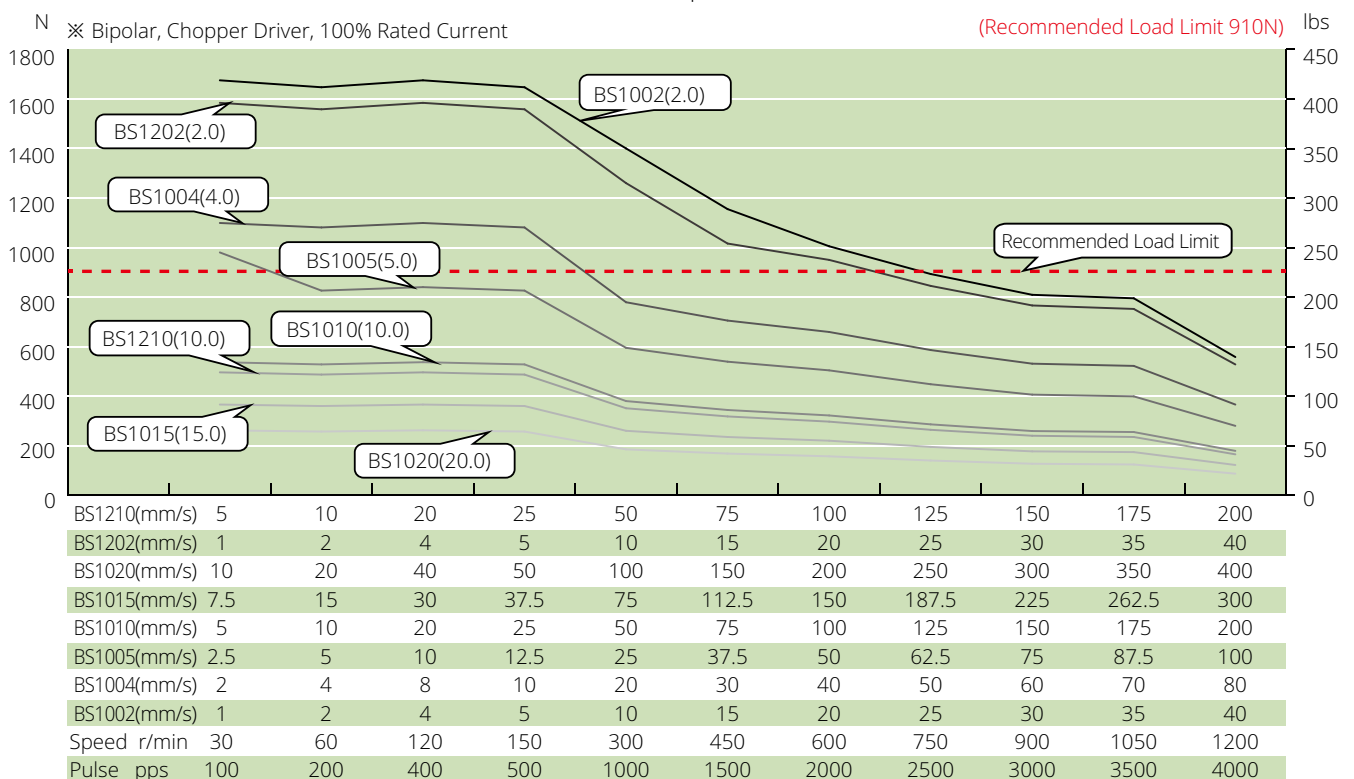
Size 23 (57mm) Series

Speed Thrust Curves

Size 23 Single Stack Speed Thrust Curves



Size 23 Double Stack Speed Thrust Curves



TEST CONDITION

Testing Voltage: 40Vdc, Driver Model: DS-OLS4-FPD bipolar, chopper driver at rated current (rms).
Motor's thrust will be changed with different voltage and driver. 50% thrust margin is recommended.