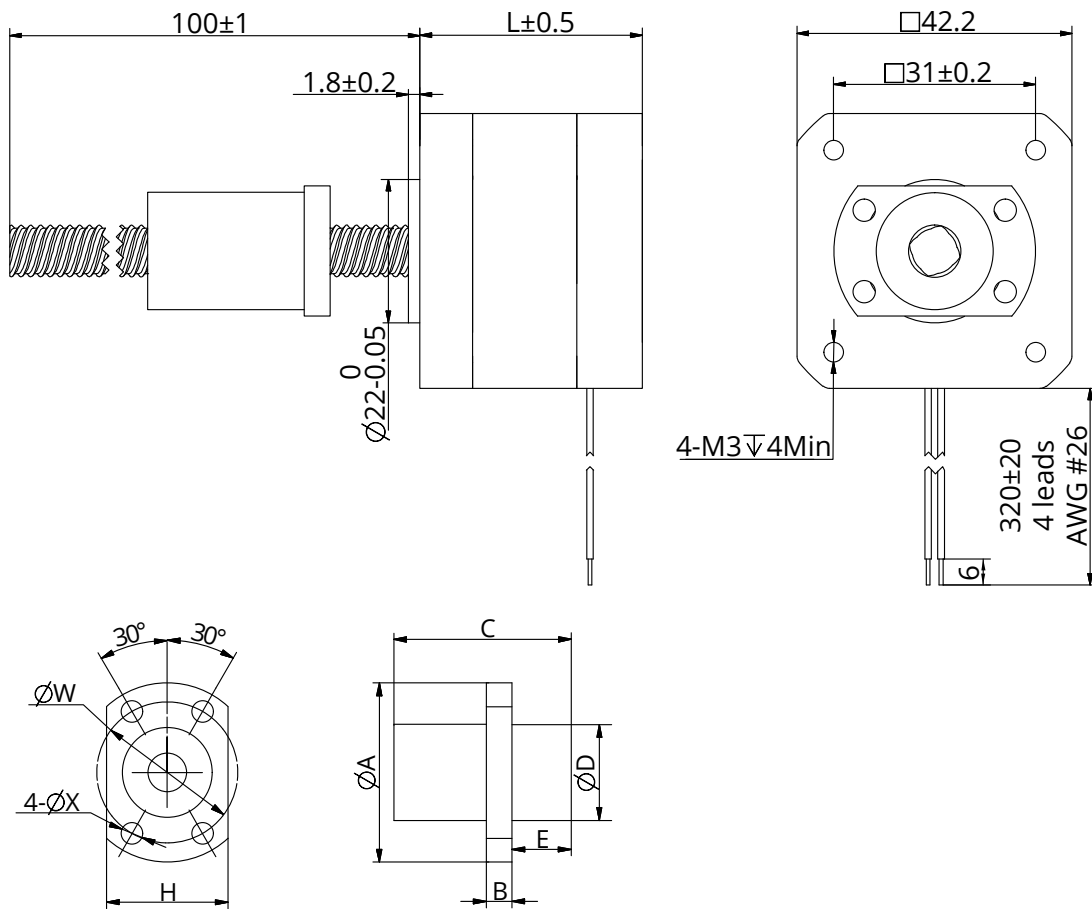


Size 17 (42mm) Series

Motor Characteristics

Motor	Voltage (V)	Current (A)	Resistance (Ω)	Inductance (mH)	Lead Wire No.	Motor Length (mm)
17E2110	3.8	1	3.8	5	4	34.1
17E2115	2.78	1.5	1.85	2.2	4	34.1
17E2212	4.56	1.2	3.8	8	4	48.1
17E2225	2.5	2.5	1	1.8	4	48.1

Dimensional Drawings



Size 17 (42mm) Series

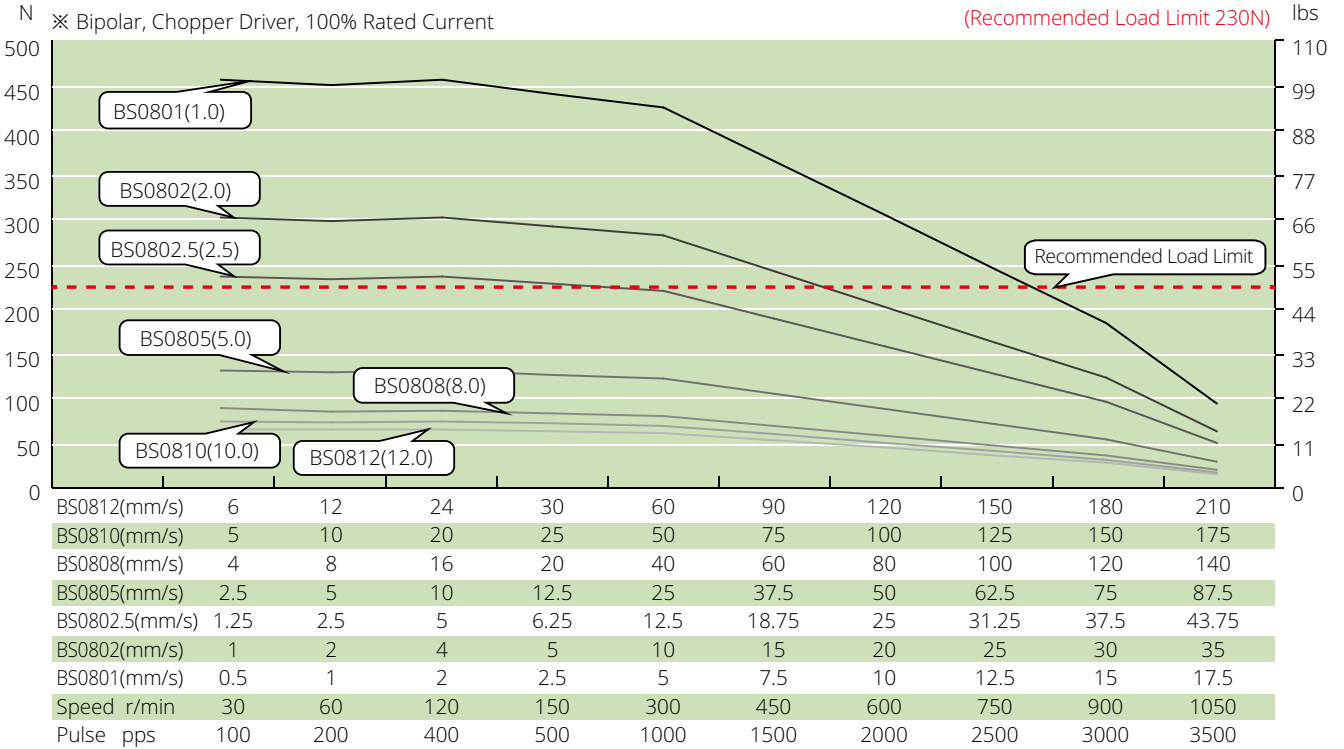
Stepper Ball Screw Specification

Ball screw type	0801	0802	0802.5	0805	0808	0810	0812						
Ball size	Φ0.8	Φ1.5875	Φ1.5875	Φ1.5875	Φ1.5875	Φ1.5875	Φ1.5875						
Number of thread	1	1	1	1	2	2	2						
Thread direction	Right												
Shaft root dia	Φ7.3	Φ6.6	Φ6.3	Φ6.6	Φ6.7	Φ6.7	Φ6.7						
Number of circuit	3.7×1	3.7×1	2.7×1	2.7×1	1.6×2	1.6×2	1.6×2						
Shaft, nut material	SCM415H												
Surface hardness	HRC 58-62												
Anti-rust treatment	Anti-rust oil												
Grade	C7												
Nut Size	A	B	C	D	H	W	X	E	Position accuracy	Total run out	Axial play	Dynamic load (N)	Static load (N)
BS0801	29	4	17	16	18	23	3.4		±0.05	0.12	≤0.03	780	1650
BS0802	37	5	24	20	22	29	4.5		±0.05	0.12	≤0.03	2400	4100
BS0802.5	29	4	16	16	18	23	3.4		±0.05	0.12	≤0.03	1850	3000
BS0805	31	4	28	18	20	25	3.4		±0.05	0.12	≤0.03	1850	3000
BS0808	31	4	20	18	20	25	3.4	6	±0.05	0.12	≤0.03	2200	3800
BS0810	31	4	20	18	20	25	3.4	7	±0.05	0.12	≤0.03	2200	3800
BS0812	31	4	24	18	20	25	3.4	6	±0.05	0.12	≤0.03	2200	3800

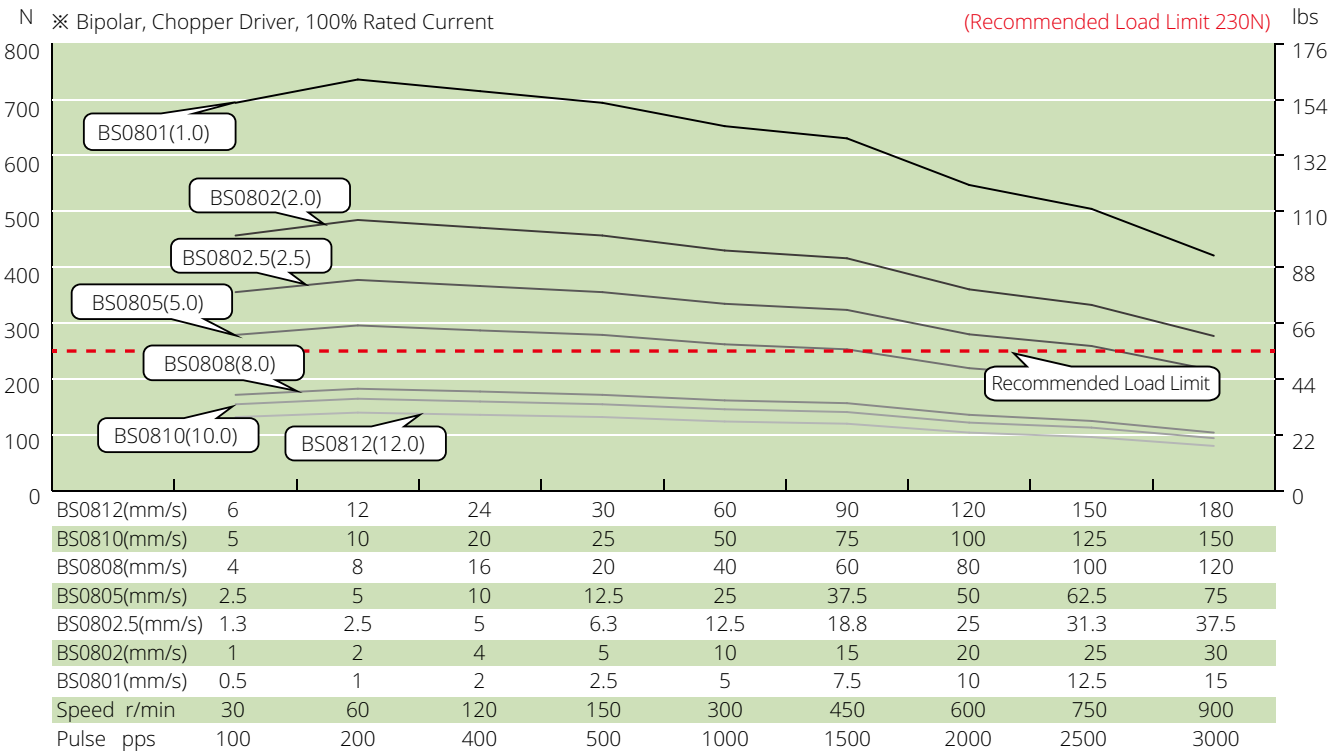
Size 17 (42mm) Series

Speed Thrust Curves

Size 17 Single Stack Speed Thrust Curves



Size 17 Double Stack Speed Thrust Curves



TEST CONDITION

Testing Voltage: 24Vdc, Driver Model: DS-OLS2-FPD bipolar, chopper driver at rated current (rms). Motor's thrust will be changed with different voltage and driver. 50% thrust margin is recommended.